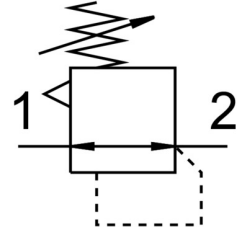


# Precision pressure regulator LRPS-1/4-0,7

Part number: 194690

FESTO



## Data sheet

Feature	Value
Short type code	LRPS
Actuator lock	Rotary knob with integrated lock
Mounting position	optional
Design	Piloted precision diaphragm control valve
Controller function	Output pressure constant With secondary venting
Symbol	00991540
Pressure gauge (ANALOG) or Pressure display (DIGITAL)	Prepared for G1/8
Operating pressure	1 bar ... 12 bar
Operating pressure	0.1 MPa ... 1.2 MPa
Pressure regulation range	0.05 bar ... 0.7 bar
Max. pressure hysteresis	0.02 bar
Standard nominal flow rate	800 l/min
Operating medium	Compressed air to ISO 8573-1:2010 [7:4:4] Inert gases
Note on operating and pilot medium	Lubricated operation not possible
Temperature of medium	-10 °C ... 60 °C
Ambient temperature	-10 °C ... 60 °C
Product weight	410 g
Type of mounting	Front panel mounting In-line installation With accessories
Pneumatic connection, port 1	G1/4
Pneumatic connection, port 2	G1/4
Note on materials	RoHS-compliant
Material seals	NBR
Material housing	Aluminium