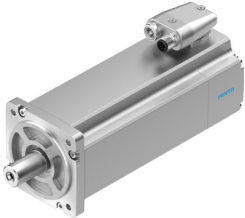


Servo motor EMME-AS-80-S-LS-AMXB

Part number: 4267581

FESTO



Data sheet

| Feature | Value |
|---|--|
| Short type code | EMME-AS |
| Ambient temperature | -10 °C ... 40 °C |
| Storage temperature | -20 °C ... 70 °C |
| Relative air humidity | 0 - 90% |
| Conforms to standard | IEC 60034 |
| Insulation protection class | F |
| Rating class as per EN 60034-1 | S1 |
| Degree of protection | IP21 |
| Electrical connector system | Plug |
| Note on materials | RoHS-compliant |
| Corrosion resistance class CRC | 0 - No corrosion stress |
| LABS-Conformity | VDMA24364 zone III |
| Approval | RCM trademark c UL us - Recognized (OL) |
| CE mark (see declaration of conformity) | To EU EMC Directive To EU Low Voltage Directive |
| Nominal operating voltage DC | 360 V |
| Nominal voltage DC | 360 V |
| Type of winding switch | Star inside |
| Number of pole pairs | 3 |
| Standstill torque | 2.8 Nm |
| Nominal torque | 2.4 Nm |
| Peak torque | 11.2 Nm |
| Nominal rotary speed | 3000 rpm |
| Max. rotational speed | 4690 rpm |
| Nominal power rating of motor | 750 W |
| Continuous stall current | 3.1 A |
| Nominal motor current | 2.6 A |
| Peak current | 12.4 A |
| Motor constant | 0.923 Nm/A |
| Voltage constant, phase-to-phase | 54.3 mVmin |
| Phase-phase winding resistance | 4.6 Ohm |
| Phase-phase winding inductance | 9.46 mH |
| Total mass moment of inertia of output | 1.68 kgcm ² |
| Product weight | 3700 g |
| Permissible axial shaft load | 70 N |

| Feature | Value |
|--|--|
| Permissible radial shaft load | 350 N |
| Rotor position sensor | Absolute multi-turn safety encoder |
| Rotor position encoder interface | HIPERFACE® |
| Rotor position sensor, encoder measuring principle | Optical |
| Rotor pos. enc., sin/cosin p/r | 128 |
| Rotor pos. encoder, typ. res. | 15 bit |
| Rot. pos. enc., typ. ang. acc. | 20 arcmin |
| Brake holding torque | 4,5 Nm |
| Operating voltage DC for brake | 24 V |
| Power consumption, brake | 12 W |
| Mass moment of inertia of brake | 0.222 kgcm ² |
| Switching cycles holding brake | 5 million idle actuations (without friction work!) |
| Safety Integrity Level (SIL), subcomponent | SIL 2, rotor position sensor SILCL 2, rotor position sensor |
| Performance Level, subcomponent | Category 3, performance level d, rotor position encoder |
| PFHd, subcomponent | 1.3 x 10E-8, rotor position sensor |
| Duration of use Tm, subcomponent | 20 years, rotor position sensor |
| Mean time to failure (MTTF), subcomponent | 797 years, holding brake |
| Mean time to dangerous failure (MTTFd), subcomponent | 874 years, rotor position sensor |
| Energy efficiency | ENEFF (CN) / Class 2 |