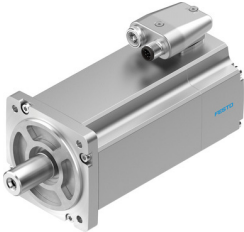


# Servo motor EMME-AS-80-SK-HS-AMX

Part number: 4267586

FESTO



## Data sheet

| Feature                                 | Value  |
|---|--|
| Short type code                         | EMME-AS  |
| Ambient temperature                     | -10 °C ... 40 °C                                   |
| Storage temperature                     | -20 °C ... 70 °C                                   |
| Relative air humidity                   | 0 - 90%  |
| Conforms to standard                    | IEC 60034  |
| Insulation protection class             | F  |
| Rating class as per EN 60034-1          | S1   |
| Degree of protection                    | IP21   |
| Featherkey shaft type                   | DIN 6885<br>A 6 x 6 x 22                           |
| Electrical connector system             | Plug   |
| Note on materials                       | RoHS-compliant                                     |
| Corrosion resistance class CRC          | 0 - No corrosion stress                            |
| LABS-Conformity                         | VDMA24364 zone III                                 |
| Approval                                | RCM trademark<br>c UL us - Recognized (OL)         |
| CE mark (see declaration of conformity) | To EU EMC Directive<br>To EU Low Voltage Directive |
| Nominal operating voltage DC            | 565 V  |
| Nominal voltage DC                      | 565 V  |
| Type of winding switch                  | Star inside  |
| Number of pole pairs                    | 3  |
| Standstill torque                       | 2.8 Nm   |
| Nominal torque                          | 2.3 Nm   |
| Peak torque                             | 11.2 Nm  |
| Nominal rotary speed                    | 3000 rpm   |
| Max. rotational speed                   | 4192 rpm   |
| Nominal power rating of motor           | 720 W  |
| Continuous stall current                | 1.8 A  |
| Nominal motor current                   | 1.6 A  |
| Peak current                            | 7.2 A  |
| Motor constant                          | 1.438 Nm/A   |
| Voltage constant, phase-to-phase        | 95.3 mV/min  |
| Phase-phase winding resistance          | 14.2 Ohm   |
| Phase-phase winding inductance          | 30 mH  |
| Total mass moment of inertia of output  | 1.4 kgcm <sup>2</sup>                              |

| <b>Feature</b>                                       | <b>Value</b>   |
|--|--|
| Product weight                                       | 3050 g   |
| Permissible axial shaft load                         | 70 N   |
| Permissible radial shaft load                        | 350 N  |
| Rotor position sensor                                | Absolute multi-turn safety encoder                             |
| Rotor position encoder interface                     | HIPERFACE®   |
| Rotor position sensor, encoder measuring principle   | Optical  |
| Rotor pos. enc., sin/cosin p/r                       | 128  |
| Rotor pos. encoder, typ. res.                        | 15 bit   |
| Rot. pos. enc., typ. ang. acc.                       | 20 arcmin  |
| Safety Integrity Level (SIL), subcomponent           | SIL 2, rotor position sensor<br>SILCL 2, rotor position sensor |
| Performance Level, subcomponent                      | Category 3, performance level d, rotor position encoder        |
| PFHd, subcomponent                                   | 1.3 x 10E-8, rotor position sensor                             |
| Duration of use Tm, subcomponent                     | 20 years, rotor position sensor                                |
| Mean time to dangerous failure (MTTFd), subcomponent | 874 years, rotor position sensor                               |
| Energy efficiency                                    | ENEFF (CN) / Class 2   |