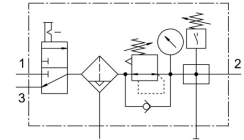
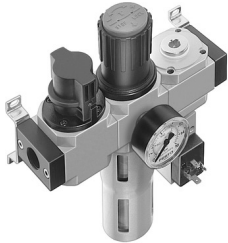


# Service unit combination LFR-1/2-D-MAXI-KF-A

Part number: 186050

FESTO



## Data sheet

Feature	Value
Size	Maxi
Maritime classification	See certificate
Short type code	LFR
Series	D
Actuator lock	Rotary knob with detent
Mounting position	Vertical +/-5°
Grade of filtration	40 µm
Condensate drain	Fully automatic
Design	Branching module Pressure switch On/off valve Filter regulator with pressure gauge
Max. condensate volume	80 ml
Bowl guard	Metal bowl guard
Symbol	00991758
Pressure gauge (ANALOG) or Pressure display (DIGITAL)	With pressure gauge
Operating pressure	2 bar ... 12 bar
Pressure regulation range	0.5 bar ... 12 bar
Max. pressure hysteresis	0.2 bar
Standard nominal flow rate	8000 l/min
Operating medium	Compressed air to ISO 8573-1:2010 [-:-:-] Inert gases
Corrosion resistance class CRC	2 - Moderate corrosion stress
Air purity class at output	Compressed air to ISO 8573-1:2010 [7:8:4] Inert gases
Temperature of medium	-10 °C ... 60 °C
Ambient temperature	-10 °C ... 60 °C
Product weight	3300 g
Type of mounting	Either: In-line installation With accessories
Pneumatic connection, port 1	G1/2
Pneumatic connection, port 2	G1/2
Material housing	Die-cast zinc
Material bowl	PC