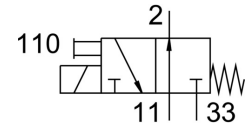


Solenoid valve

MHE4-MS1H-3/20-1/4

Part number: 525207

FESTO



Data sheet

Feature	Value
Valve function	3/2 open, single solenoid
KC mark	KC-EMV
lap	Underlap
Type of actuation	Electric
Construction width	18 mm
Standard nominal flow rate	400 l/min
pneumatic working port	G1/4
Operating voltage	24 V DC
Operating pressure	-0.9 bar ... 8 bar
Design	Pressure-relieved poppet valve
Type of reset	Mechanical spring
Degree of protection	IP65
Approval	RCM trademark c UL us - Recognized (OL)
Nominal size	4 mm
Grid dimension	24 mm
Short type code	MH4
Exhaust-air function	With flow control option
Sealing principle	Soft
Mounting position	optional
Manual override	Non-detenting
Type of piloting	Direct
Flow direction	Reversible with restrictions
Symbol	00991322
Reverse polarity protection	Bipolar
Additional functions	Spark arresting Holding current reduction Protective circuit
Operating pressure, reversible	-0.9 bar ... 1 bar
Max. switching frequency	210 Hz
Switching time off	3.5 ms
Switching time on	3.5 ms
Tolerance switching time off	+10%/-40%
Tolerance switching time on	+10%/-30%
Switching time dispersion from 1 Hz	0.3 ms
Duty cycle	100%

Feature	Value
Characteristic coil data	24 V DC: low-current phase 2.125 W, high-current phase 8.5 W
Permissible voltage fluctuations	+/- 10 %
Operating medium	Compressed air to ISO 8573-1:2010 [7:4:4]
Note on operating and pilot medium	Lubricated operation possible (in which case lubricated operation will always be required)
CE mark (see declaration of conformity)	To EU EMC Directive
Vibration resistance	Transport application test with severity level 2 to FN 942017-4 and EN 60068-2-6
Shock resistance	Shock test with severity level 2 to FN 942017-5 and EN 60068-2-27
Corrosion resistance class CRC	2 - Moderate corrosion stress
Temperature of medium	-5 °C ... 60 °C
Ambient temperature	-5 °C ... 60 °C
Product weight	270 g
Electrical connection	2-pin Plugs
Type of mounting	With through-hole
Pneumatic connection, port 11	G1/4
Pneumatic connection, port 2	G1/4
Pneumatic port 33	G1/4
Note on materials	Copper/PTFE-free RoHS-compliant
Material seals	HNBR NBR
Material housing	Die-cast zinc Coated
Material screws	Steel Galvanised