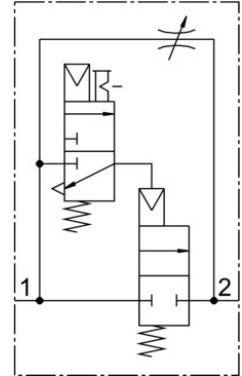


Soft start valve MS6-DE-1/4-10V24

Part number: 542564

FESTO



Data sheet

Feature	Value
Suitable for use with food	See supplementary material information
Short type code	MS6-DE
Type of actuation	Electric
Mounting position	optional
Manual override	Detenting Non-detenting
Design	Piston seat
Type of reset	Mechanical spring
Type of piloting	Pilot actuated
Pilot air supply	Internal
Flow direction	Non-reversible
Symbol	00991501
Valve function	2/2
Switching position indicator	With accessories
Operating pressure	4 bar ... 10 bar
b value	0.54
C value	11.22 l/sbar
Standard nominal flow rate	2700 l/min
Duty cycle	100%
Characteristic coil data	24 V DC: 1.8 W
Operating medium	Compressed air to ISO 8573-1:2010 [7:4:4] Inert gases
Note on operating and pilot medium	Lubricated operation possible (in which case lubricated operation will always be required)
Corrosion resistance class CRC	2 - Moderate corrosion stress
Temperature of medium	-10 °C ... 50 °C
Degree of protection	IP65
Ambient temperature	-10 °C ... 50 °C
Approval	c UL - Recognized (OL)
Product weight	680 g

Feature	Value
Electrical connection	Type C Plugs To DIN EN 175301-803 Square design
Signal status display	With accessories
Type of mounting	Either: In-line installation With accessories
Pneumatic connection, port 1	G1/4
Pneumatic connection, port 2	G1/4
Note on materials	RoHS-compliant
Material seals	NBR
Material housing	Die-cast aluminium