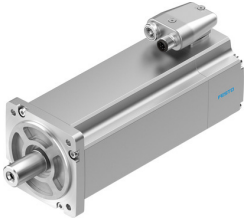


Servo motor EMME-AS-80-S-LS-AMB

Part number: 2093107

FESTO



Data sheet

Feature	Value
Number of pole pairs	3
Short type code	EMME-AS
Rotor position sensor	Absolute multi-turn encoder
Rotor position encoder interface	HIPERFACE®
Rotor position sensor, encoder measuring principle	Capacitive
Max. rotational speed	4690 rpm
Nominal rotary speed	3000 rpm
Operating voltage DC for brake	24 V
Continuous stall current	3.1 A
Insulation protection class	F
Power consumption, brake	12 W
Motor constant	0.923 Nm/A
Nominal operating voltage DC	360 V
Nominal power rating of motor	750 W
Nominal voltage DC	360 V
Nominal motor current	2.6 A
Rotor pos. encoder, typ. res.	12 bit
Rot. pos. enc., typ. ang. acc.	20 arcmin
Rotor pos. enc., sin/cosin p/r	16
Phase-phase winding resistance	4.6 Ohm
Phase-phase winding inductance	9.46 mH
Type of winding switch	Star inside
Peak current	12.4 A
Voltage constant, phase-to-phase	54.3 mVmin
Rating class as per EN 60034-1	S1
CE mark (see declaration of conformity)	To EU EMC Directive To EU Low Voltage Directive
Corrosion resistance class CRC	0 - No corrosion stress
Storage temperature	-20 °C ... 70 °C
Relative air humidity	0 - 90%
Degree of protection	IP21
Ambient temperature	-10 °C ... 40 °C
Approval	RCM trademark c UL us - Recognized (OL)
Total mass moment of inertia of output	1.68 kgcm ²
Brake holding torque	4.5 Nm

Feature	Value
Mass moment of inertia of brake	0.222 kgcm ²
Nominal torque	2.4 Nm
Peak torque	11.2 Nm
Standstill torque	2.8 Nm
Permissible axial shaft load	70 N
Permissible radial shaft load	350 N
Mean time to failure (MTTF), subcomponent	797 years, holding brake
Mean time to dangerous failure (MTTFd), subcomponent	271 years, rotor position sensor
Switching cycles holding brake	5 million idle actuations (without friction work!)
Product weight	3700 g
Electrical connector system	Plug
Note on materials	Contains paint-wetting impairment substances RoHS-compliant
Conforms to standard	IEC 60034