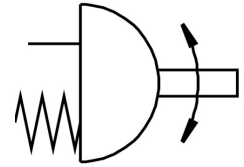


# Semi-rotary drive DAPS-0015-090-RS2-F0305

Part number: 533428

FESTO



## Data sheet

Feature	Value
Size of valve actuator	0015
Flange hole pattern	F03 F05
Swivel angle	90 deg
End-position adjustment range at 0°	-1 deg ... 9 deg
End-position adjustment range at nominal swivel angle	81 deg ... 91 deg
Shaft connection depth	13.2 mm
Short type code	DAPS
Note on end-position adjusting range	One end position optionally adjustable
Fitting connection conforms to standard	ISO 5211
Cushioning	No cushioning
Mounting position	optional
Mode of operation	Single-acting
Design	Scotch yoke system
Position detection	Without
Closing direction	Closes to the right
Symbol	00991266
Valve connection conforms to standard	VDI/VDE 3845 (NAMUR)
Safety Integrity Level (SIL)	Up to SIL 2 High Demand mode To SIL 2 Low Demand mode
Supply pressure for spring strength	3.5 bar
Operating pressure	3.5 bar ... 8.4 bar
Nominal operating pressure	5.6 bar
ATEX category gas	II 2G
Explosion ignition protection type for gas	Ex h IIC T6...T3 Gb X
ATEX category dust	II 2D
Explosion ignition protection type for dust	Ex h IIIC T85°C...T200°C Db X
Explosion ambient temperature	-20°C ≤ Ta ≤ +60°C
Ambient temperature	-20 °C ... 80 °C
Explosion protection	Zone 1 (ATEX) Zone 2 (ATEX) Zone 21 (ATEX) Zone 22 (ATEX)
Operating medium	Compressed air to ISO 8573-1:2010 [7:4:4]
Note on operating and pilot medium	Lubricated operation possible (in which case lubricated operation will always be required)
CE mark (see declaration of conformity)	To EU Explosion Protection Directive (ATEX)

Feature	Value
Corrosion resistance class CRC	3 - High corrosion stress
Torque at nominal operating pressure and 0° swivel angle	18.8 Nm
Torque at nominal operating pressure and 50° swivel angle	10.3 Nm
Torque at nominal operating pressure and 90° swivel angle	15.7 Nm
Note on torque	The operating torque of the actuator must not be higher than the maximum permissible torque listed in ISO 5211, with reference to the size of the mounting flange and of the coupling.
Spring return torque at 0° swivel angle	6.3 Nm
Spring return torque at 50° swivel angle	4.7 Nm
Spring return torque at 90° swivel angle	9.4 Nm
Spring strength	2
Air consumption at 0.6 MPa (6 bar, 87 psi) per cycle 0°-nominal swivel angle-0°	0.63 l
Product weight	1200 g
Shaft connection	T11
Pneumatic connection	G1/8
Note on materials	RoHS-compliant
Material cover	Wrought aluminium alloy
Material seals	FPM NBR PUR
Material housing	Wrought aluminium alloy
Material screws	High-alloy steel
Material shaft	High-alloy steel
Material number shaft	1.4305